

MARIA GABRIELLA ZEN

FAREWELL

Versione per vibrafono (e voce dell'esecutore ad libitum)

(1999)

Codice Opera SIAE: 91362002000

©Copyright 1999 by Maria Gabriella Zen. Tutti i diritti sono riservati. All rights reserved.

FAREWELL

versione per vibrafono

Maria Gabriella Zen
1999

Molto calmo, liberamente
(con bacchette molto morbide)
un po' esitando

PPP Ped abbassato sempre

5

un po' allargando

10

A tempo

15

voce
8 p for- get

vib.
al
nulla

un po' allargando

20

A tempo

allargando

(25)

A tempo

(30)

voce

mf for. got

al niente

un po' ecc., allargando

(35)

A tempo

(40)

allargando un poco

A musical staff in treble clef with a key signature of one flat (B-flat). It contains a series of chords and melodic fragments, some with complex rhythmic values and accidentals.

A tempo, via via

(45)

A musical score for voice and oboe. The voice part (top staff) has lyrics: "for- got- ten". The oboe part (bottom staff) provides accompaniment with various rhythmic patterns and accidentals. A slur is drawn over the voice part.

accelerando e cresc. molto

(50)

A musical staff in treble clef with a key signature of one flat (B-flat). It contains a series of chords and melodic fragments, some with complex rhythmic values and accidentals.

Più mosso (♩ = ♩ sempre)

(55)

A musical staff in treble clef with a key signature of one flat (B-flat). It contains a series of chords and melodic fragments, some with complex rhythmic values and accidentals.

Con forza

(No più mosso)

(60)

A musical staff in treble clef with a key signature of one flat (B-flat). It contains a series of chords and melodic fragments, some with complex rhythmic values and accidentals.



65



[CADENZA, (liberamente)]

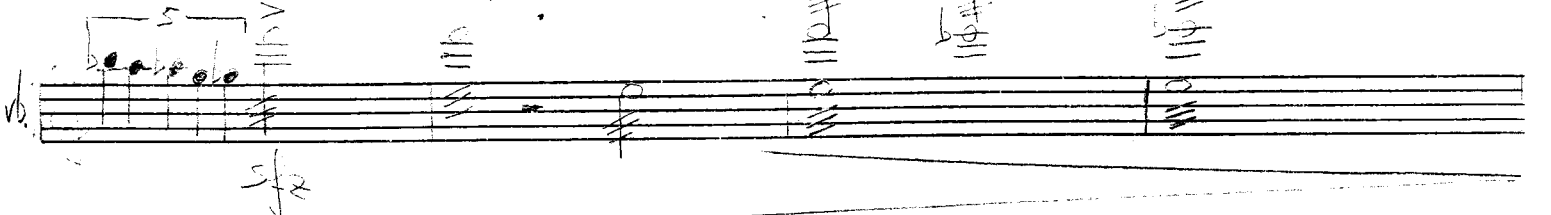


sfz
Pied. (obscuro)

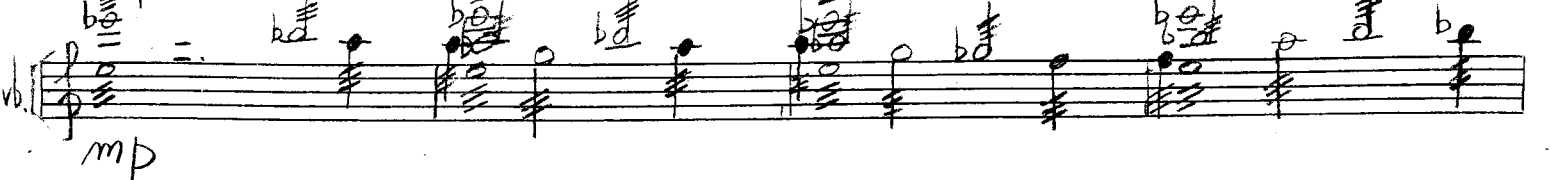
Via via accelerando all'ultimo -



Più calmo, liberamente



Tempo I



mp

85

- 5 -

Handwritten musical notation for measure 85. The staff is in treble clef with a key signature of one flat (B-flat). It contains several chords and notes, including a whole note chord in the final measure.

90

Handwritten musical notation for measure 90. The staff is in treble clef with a key signature of one flat. It begins with a *ppp* dynamic marking and contains several chords and notes.

95

Handwritten musical notation for measure 95. The staff is in treble clef with a key signature of one flat. It begins with a *ppp* dynamic marking and the instruction *sempre*. The notation includes a 3/2 time signature and various chords.

100

Handwritten musical notation for measure 100. The staff is in treble clef with a key signature of one flat. It contains several chords and notes, including a 3/2 time signature.

105

Handwritten musical notation for measure 105. The top staff is for the voice, starting with a *ppp* dynamic marking and the lyrics "fare-well" and "lunghezzine". The bottom staff is for the piano accompaniment, starting with a *p* dynamic marking. The time signature is 3/2.

1939